

AQUA  Coral

CORPORATE FROM CORE

ABOUT LADANI ASSOCIATES



FROM THE DESK OF ARCHITECT

It's been 25 years into this field and Ladani Group's motive has always been very crystal clear and that is how to keep contributing in terms of the nation's infrastructural growth. This time we have headed towards the first corporate cream culture of new 150 feet ring road and as an Architect, it's very close by my heart. Being the first corporate of that area, Aqua Coral is all set to set higher benchmarks in the corporate world whether in terms of 4 level parking, 3 level showrooms, landscaping elevation or let's say respiration and yes along with all these it contains Rajkot's first-ever capsule lift to lift the corporate standard. If I need to describe in one line then I would say it would be a corporate from the core.



ABOUT AQUA GROUP

Premium and Aqua both have been the equivalent of each other as Aqua group has been known for their larger than life premium residential and commercial projects, specifically into 4 BHK residential projects.

Aqua, Aqua Blue, Aqua Elegance and such other projects are the shreds of evidence of it. For the last few years, we were waiting for such a collective initiative towards creating a new way towards corporate project visualization and here we are come up with Aqua Coral.

PROJECT BY



History is the witness, whenever the big banners have combined their excellence or joined hands for the betterment of infrastructure; they always create something historic and epic and yes, you read it right! Tulsi Group, Aqua Group and Vrindavan Group the tremendous trio have come up with Rajkot's most awaited corporate project called Aqua Coral. Where the people of Rajkot would witness the collaboration of a revolutionary concept with some unsung innovations.

Premium



Offices



Showrooms



REMARKABLE CORPORATE MARK



A corporate spot marks its success mark when it gets located at city's one of the most renowned place and Aqua Coral would be at walking distance from Kataria Motors and new 150 feet ring road bypass.

[**TOWERING ENOUGH**]

Credibility In Accessibility



THE INITIATOR



The most valuable thing after a trend is the trendsetter and as far as the corporate culture is concerned Aqua Coral would be a trendsetter to bring corporate vibes on the new 150 feet ring road.

[**1st COMMERCIAL**]
Of New 150 Feet Ring Road

Immensely Massive

The grandeur of showrooms be visible when they get huge heights and here the heights provided to every floor's showrooms would be the new heights of setting the trend towards the look of showrooms and the capsule lift is like a cherry on the cake.



IT'S A
SHOW-TIME

Showrooms



BIGGER SPACE FOR BIG DREAMS



If the dreams are not small, then why keep the dreaming space small. Keeping the same in mind office and showroom space have been kept wisely without being stingy at all.

[EAST-WEST]

OPEN



IMPACTFUL CAPSULE



When it comes to lifts, the capsule culture has not reached here yet but it's soon to reach Aqua Coral. That would diversify the ways of people and the showroom owners while reaching out to their destination.

[HEIGHT OF SHOWROOMS]

GROUND FLOOR - 18 FT. | 1st FLOOR - 15 FT.
| 2nd FLOOR - 12 FT.



MOTION COMES WITH EMOTION



The one always gets attached emotionally to the working place because ultimately that place is responsible behind life's happy going motion. But if the time gets wasted in finding a parking slot how that would happen so to level up the life, here we have provided 4 level parking.

[4 LEVEL PARKING]

GROUND FLOOR + 3 BASEMENT

Get Set For Corporate Goal

In business, setting a goal is just a visionary and introductory phase, The real game starts then after and during this journey to reach out to the goal, your working place, your office accompanies like a soul-mate. So set your goal and get it.

JUSTIFIED

OFFICES



Offices



BUNDLE OF OPPORTUNITIES



Once If you would stand right in front of Aqua Coral, you would be able to see a bundle of opportunities in terms of **18 showrooms** and **122 offices** and you would tell yourself “Go and just Grab it.”

[SHOWROOMS]

18

[OFFICES]

122



SORTED IN TERMS OF PARKING



In current times parking is like oxygen to corporates, it keeps you moving. Here there is a substantial parking lot and that means a lot specifically when the public gathering is at its peak.

[SUBSTANTIAL]

Parking



Basement Level-2 Layout



Basement Level-1 Layout



Ground Floor Layout



TOWARDS KALAWAD ROAD

NEW 150 FT. RING ROAD

TOWARDS SHAPAR

60 FT. WIDE ROAD



TOWARDS KALAWAD ROAD

NEW 150 FT. RING ROAD

TOWARDS SHAPAR

60 FT. WIDE ROAD



TOWARDS KALAWAD ROAD

NEW 150 FT. RING ROAD

TOWARDS SHAPAR

60 FT. WIDE ROAD



TOWARDS KALAWAD ROAD

NEW 150 FT. RING ROAD

TOWARDS SHAPAR

60 FT. WIDE ROAD

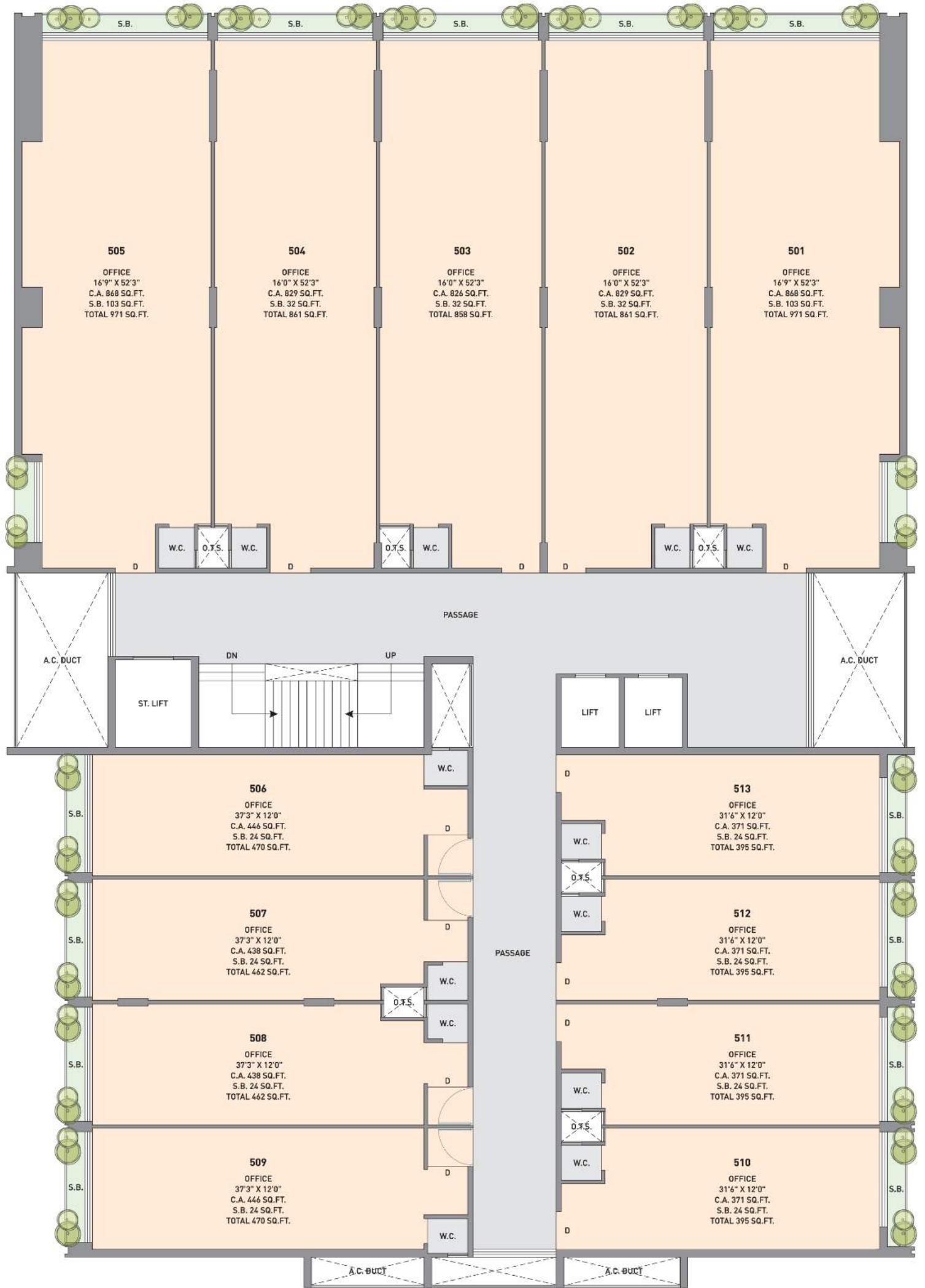


TOWARDS KALAWAD ROAD

NEW 150 FT. RING ROAD

TOWARDS SHAPAR

60 FT. WIDE ROAD



TOWARDS KALAWAD ROAD

NEW 150 FT. RING ROAD

TOWARDS SHAPAR

60 FT. WIDE ROAD



TOWARDS KALAWAD ROAD

NEW 150 FT. RING ROAD

TOWARDS SHAPAR

60 FT. WIDE ROAD



TOWARDS KALAWAD ROAD

NEW 150 FT. RING ROAD

TOWARDS SHAPAR

60 FT. WIDE ROAD

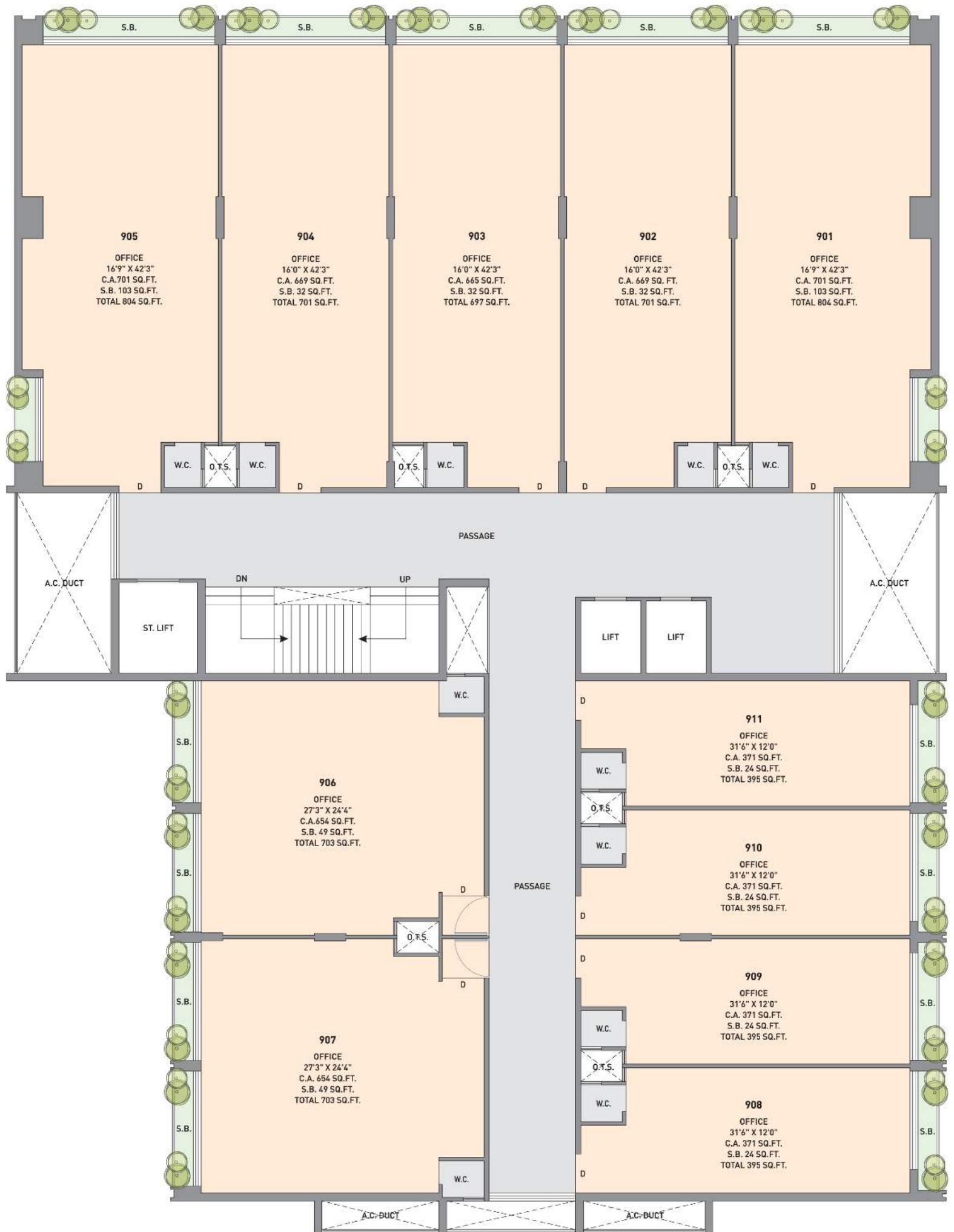


TOWARDS KALAWAD ROAD

NEW 150 FT. RING ROAD

TOWARDS SHAPAR

60 FT. WIDE ROAD



TOWARDS KALAWAD ROAD

NEW 150 FT. RING ROAD

TOWARDS SHAPAR

60 FT. WIDE ROAD



TOWARDS KALAWAD ROAD

NEW 150 FT. RING ROAD

TOWARDS SHAPAR

60 FT. WIDE ROAD



TOWARDS KALAWAD ROAD

NEW 150 FT. RING ROAD

TOWARDS SHAPAR

60 FT. WIDE ROAD



AMENITIES



Well equipped
fire fighting system



24x7 security



DG backup
for common areas



CCTV surveillance
for common area



Flexibility of plumbing
for other requirements



Dedicate space
for AC outdoor units

NEAR BY



Cosmoplex

03 Minutes (1.3 Km)



Maruti Suzuki Kataria

01 Minutes (400 M)



Airport Rajkot

17 Minutes (8.0 Km)



Railway Junction

20 Minutes (9.0 Km)



National Highway

15 Minutes (7.5 Km)



Ahmedabad

4 Hours 20 Minutes
(231 Km)



Jamnagar

1 Hour 36 Minutes
(92.5 Km)



Kandla Port

4 Hours 01 Minutes
(210 Km)

SPECIFICATIONS



Lift

- Autodoor standard company lift with safety gear
- Capsule lift for showrooms.
- Luggage lift & others lift.



Flooring

- Elegant & exquisite flooring.
- Unique & designer flooring in reception.



Building Structure

- Earthquake resistant RCC frame structure.



Fire Safety

- Fire hydrant and fire extinguisher provided as per NBC norms.



Electrification

- Finolex or equivalent cable wiring & modular switches with ISI standard fittings of good quality.
- Concealed electrification with adequate points.



Toilets

- Bathroom dado up to 7' height of designer series.
- Flooring with ceramic tiles.
- Stone frames for bathrooms.
- Branded sanitary ware and CP fittings.



Elevation

- Fabulous building elevation.
- Maintenance free design.



Paint

- Internal walls finish with wall putty.
- Weather shield acrylic emulsion paint for exteriors.
- All common area elegant paint for interiors.

KEY PLAN



LEGAL DISCLAIMER : All the elements, objects, treatment, materials, equipment & colour scheme are artisan's impression & purely for presentation purpose. By no means it will form a part of the amenities, features or specifications of our final product.

NOTE : All rights for alteration, modification & development in design or specifications on by architects & or developer shall be binding to all the members • Completion certificates as per RMC rules, clear title document will be provided by promoters for loan purpose. This brochure is for private circulation only. By no means it will form part of any legal contract.

- Stamp duty, Registration charges, Legal charges, PGVCL charges, Society maintenance deposit, etc. shall be borne by the purchaser.
- TDS, TCS, GST & / or any other taxes levied in future will be borne by the purchaser as applicable.
- Any additional charges or duties levied by the government / local authorities during or after completion of the scheme shall be borne by the purchaser.
- In the interest of continual developments in design & quality of construction, the developer reserves all rights to make any changes in the scheme including and not limited to technical specifications, design, planning, layout & all purchasers shall abide by such changes.
- Changes / alteration of any nature including elevation, exterior colour scheme, balcony grill or any other changes affecting the overall design concept & outlook of the scheme are strictly NOT PERMITTED during or after the completion of the scheme.
- Any RCC member (Beam, Column, Slab) must not be damaged during your interior work.
- Low-voltage cables such as telephone, TV and internet cables shall be strictly laid as per consultant's service . No wire / cables / conduits units shall be laid or installed such that they form hanging formation on the building exterior faces.
- Common passages / landscaped areas are not allowed to be used for personal purpose.
- AC outdoor Units space is already designated in consultation with HVAC consultant. It is planned according to design specification/elevation, available space,etc. No changes in location can be made on personal basis.

Project By:



Designed By :



CLICK HERE
FOR LOCATION

Site Address :

New 150 Ft. Ring Road, Nr. Kataria Showroom
FNF Corner, Mota Mava, Rajkot.

Contact :



7043008800

Yogesh Garala | Haresh Gol | Ramesh Kaneriya
Raju Dhol | Kishan Patel | Harshad Patel